

Ladson
Industrial
Park

Ladson, South Carolina



BentallGreenOak 



LADSON INDUSTRIAL PARK

**Move in ready opportunities for lease
in Ladson, South Carolina**

- Building 1: ±110,760 sf available
 - ±1,718 sf office
- Building 4: ±230,368 sf available
 - ±2,000 sf office
- Located within the newly constructed Ladson Industrial Park
- Multiple access points to I-26
- Close proximity to Port of Charleston terminals



www.LadsonIndustrialPark.com

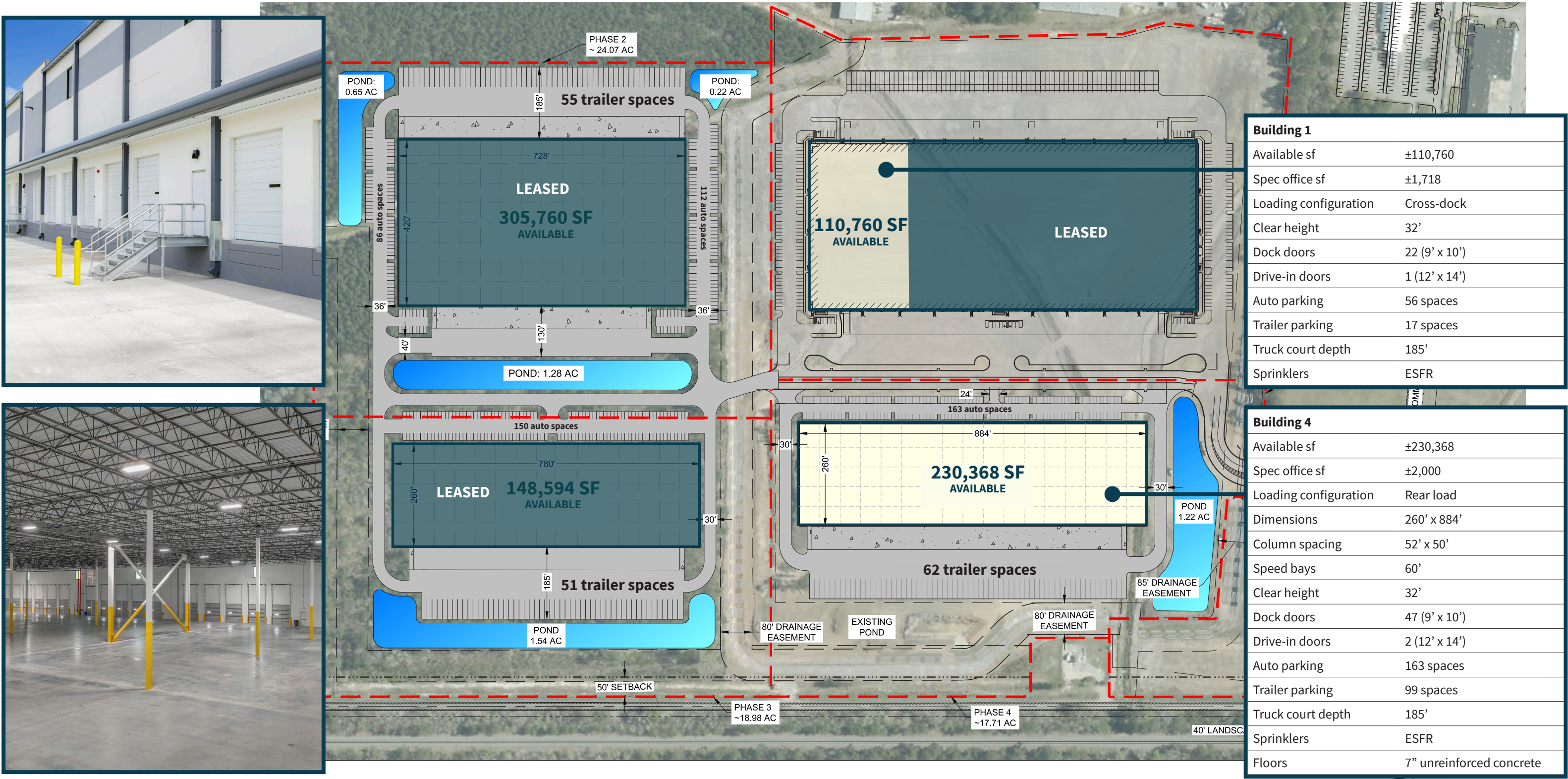


Lee Allen
Executive Managing Director
+1 843 805 5111

Kevin Coats
Senior Managing Director
+1 843 805 5112

Tyler Smith
Senior Associate
+1 843 805 5118

MASTER SITE PLAN

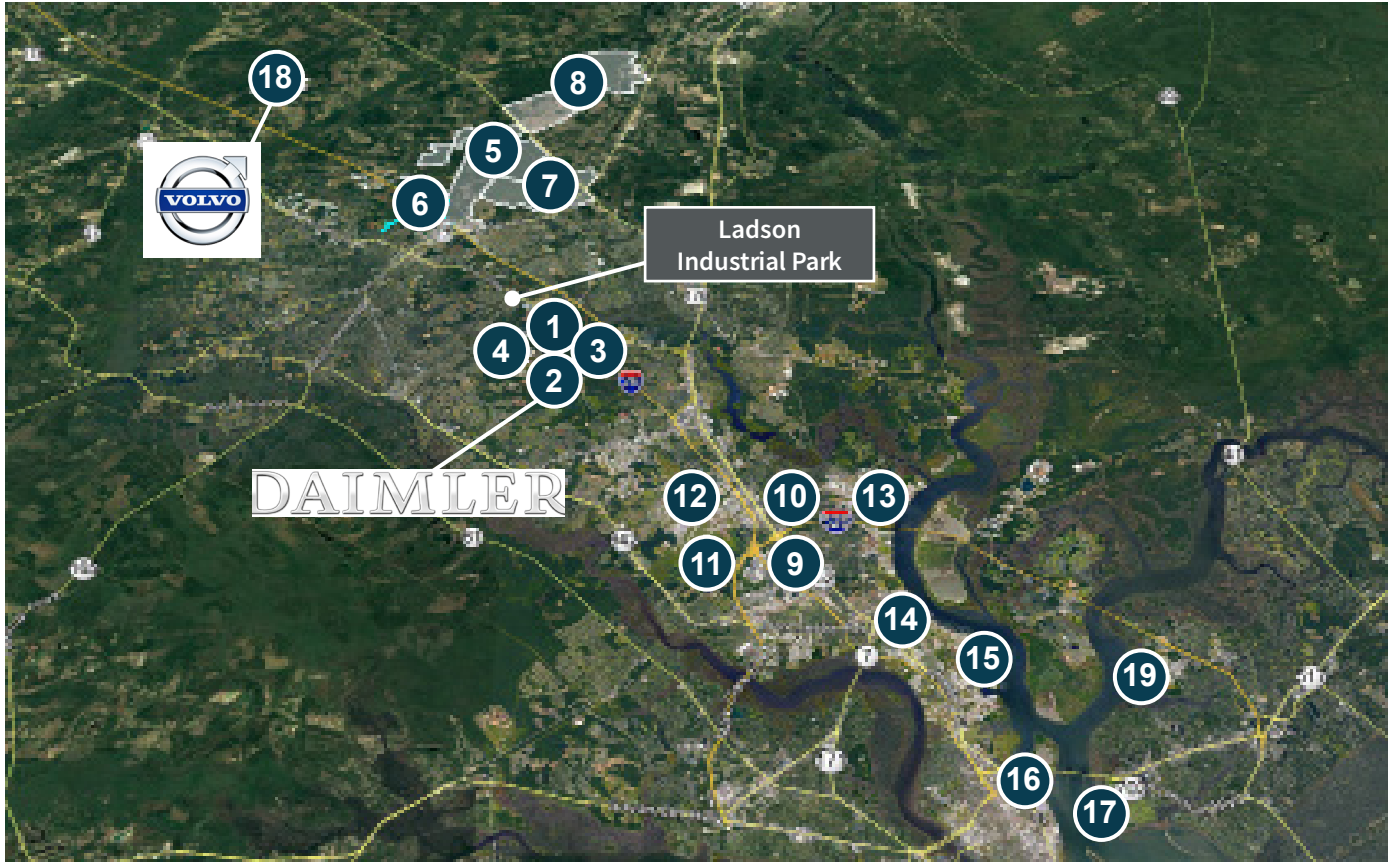


DELIVERED 2022 / 2023



LOCATION

ACCESS



#	Economic Driver	Distance to LIP (miles)
1	Cummins	3.2
2	Daimler Plant	3.4
3	Isringhausen	3.9
4	TIGHITCO	4.7
5	Nexton Development	5.0
6	Nexton Interchange	7.5
7	Carnes Crossroad Development	7.6
8	Cane Bay Development	12.3
9	Verizon	12.6
10	AHT	12.8

#	Economic Driver	Distance to LIP (miles)
11	Boeing Facility	13.2
12	Charleston International Airport	13.5
13	North Charleston Terminal	13.7
14	Navy Base Intermodal	16.0
15	Hugh Leatherman Terminal	17.6
16	Colombus Street Terminal	18.8
17	Union Pier Terminal	22.0
18	Volvo Facility	21.7
19	Wando Welch Terminal	24.9

Multiple points of access to I-26 via:
Exit 203, Exit 205, Palmetto Commerce Parkway



ABOUT OWNERSHIP

BentallGreenOak 

BentallGreenOak is a leading, global real estate investment management advisor and a globally-recognized provider of real estate services. BentallGreenOak serves the interests of more than 750 institutional clients with expertise in the asset management of office, industrial, multi-residential, retail and hospitality property across the globe.

BentallGreenOak has offices in 28 cities across fourteen countries with deep, local knowledge, experience, and extensive networks in the regions where we invest in and manage real estate assets on behalf of our clients in primary, secondary and co-investment markets. BentallGreenOak is a part of SLC Management, which is the institutional alternatives and traditional asset management business of Sun Life.

For more information, please visit www.bentallgreenoak.com



Lee Allen
Executive Managing Director
+1 843 805 5111

Kevin Coats
Senior Managing Director
+1 843 805 5112

Tyler Smith
Senior Associate
+1 843 805 5118